

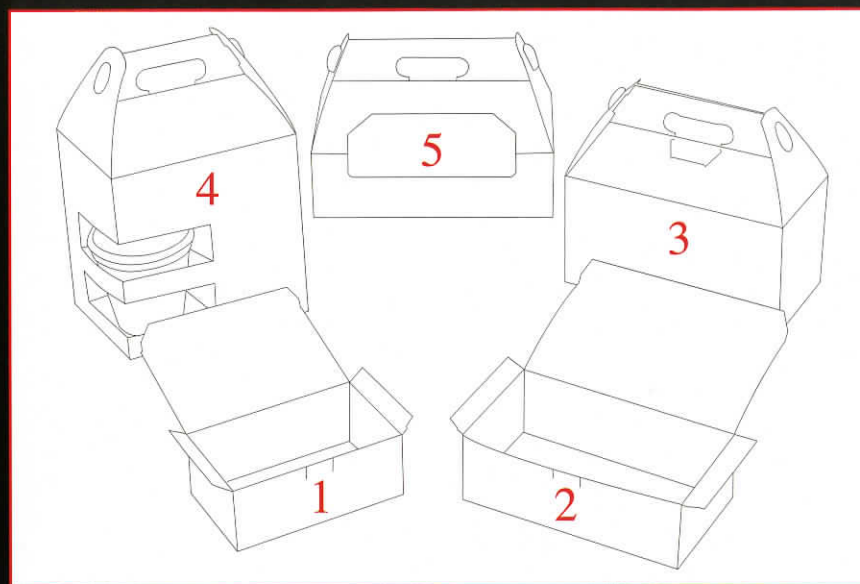
Presenting: "Hot To Go"



See Product Specifications on Back

Climax Manufacturing Company

Product Specifications



Number	Description	Suggested Use	Pack	Wt/Cs	Cs/Pallet
1	7 x 4.1/4 x 2.3/4"	Tuck-Top Snack Size Take-Out	250	17#	60
2	9 x 5 x 3"	Tuck-Top Dinner Size Take-Out	250	24#	50
3	9.1/2 x 5 x 5"	Handle Top Small Family Take-Out	100	17#	80
4	8 x 6 x 8"	Handle Top Large Family Take-Out	100	25#	55
5	10 x 6 x 3"	Handle Top "No Leak" Design	100	14#	70

Our "Hot-To-Go" line is designed to provide a very distinguished line of deli packaging. Whether you want to package a small snack or a full family meal, Climax has a size that's sure to meet your need. We've even designed a "No-Leak Container" that ships to you flat, takes up very little counter space, yet contains the greasy mess of fried chicken for up to 24 hours.

Contact your Climax representative for further information.

Climax Manufacturing Company 7840 State Rte. 26 Lowville, NY 13367 1•800•225•4629